

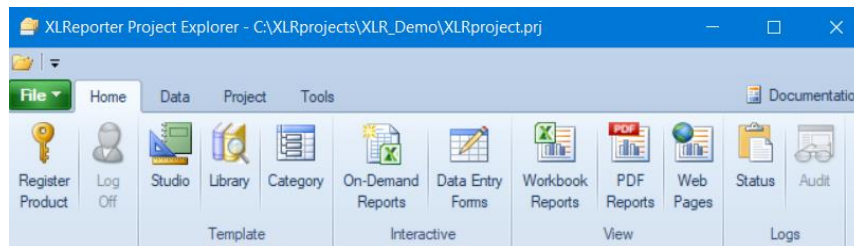
Status Logs

Overview

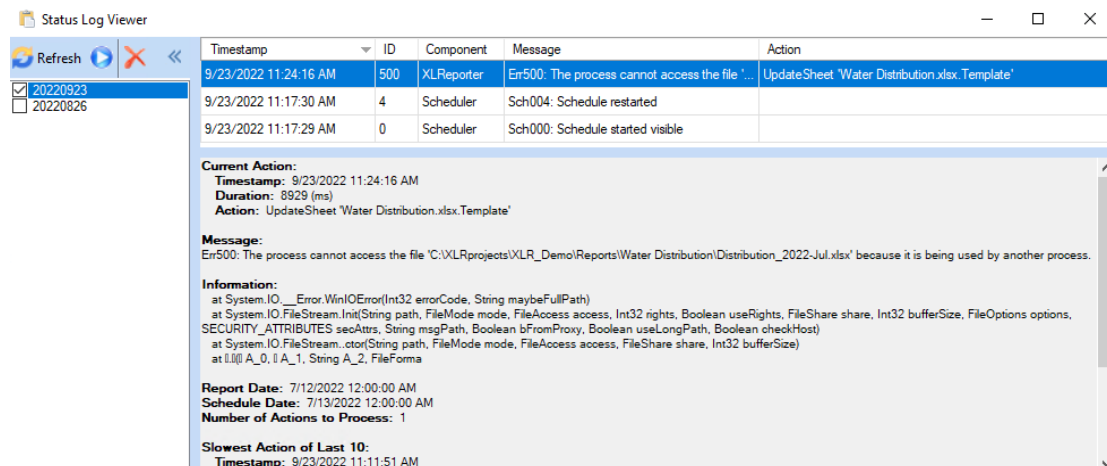
Status logs contain a log of the activity performed by **XLReporter**. If there is a suspected issue with an **XLReporter** component, the Status Logs should be the first place to look to try to diagnose and correct the issue.

The logs typically contain information about when the scheduler starts and stops and well as any errors that occur from the Scheduler (such as reading process values) or from report generation.

User Interface




The **Status Logs** are viewed in the viewer opened from the **Project Explorer**, **Home** tab, **Logs**, **Status**. It is used to view the status logs that are generated when actions are processed.



The log files are created daily and stored in the **Log** folder of the project and are named for the Year (4 digits) Month (2 digits) and Day (2 digits) they occurred. The contents displayed are the files with the checkbox next to the name. Multiple files can be selected and displayed at once.

To delete the checked files, click the delete button.

Logs

The right pane shows a grid with each log recorded. If additional log files are selected and **Refresh** is clicked the display refreshes with all the logs in those files. The display can be refreshed periodically by clicking the start refresh button .

If content is not fully visible it can be displayed in a popup is shown by hovering the mouse cursor over the text. All log information is also available in the bottom pane.

The content of the grid can be filtered by right clicking on the headers of each column.

Troubleshooting

The Status Log is helpful for troubleshooting why something in the project may not be working as expected.

For example, the error seen in the above image, *Err500: The process cannot access the file 'C:\XLRprojects\XLR_Demo\Reports\Water Distribution\Distribution_2022-Jul.xlsx' because it is being used by another process* indicates that this report is either open or being used elsewhere. To allow this action to successfully execute, all instances of this file must be closed.

Information in this document is subject to change without notice. SmartSights, LLC assumes no responsibility for any errors or omissions that may be in this document. No part of this document may be reproduced or transmitted in any form or by any means, electronic or mechanical, for any purpose, without the prior written permission of SmartSights, LLC.

Copyright 2000 - 2024, SmartSights, LLC. All rights reserved.

XLReporter® is a registered trademark of SmartSights, LLC.

Microsoft® and Microsoft Excel® are registered trademarks of Microsoft, Inc.
All registered names are the property of their respective owners.