

Convert a XLReporter Project from GE iFIX native to iFIX OPC

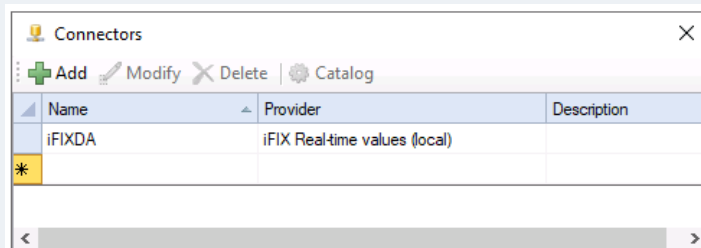
Overview

An existing XLReporter project that reports from data in GE iFIX through the local interface can be easily converted to report from OPC. OPC is a standard and can also run from remote PC's.

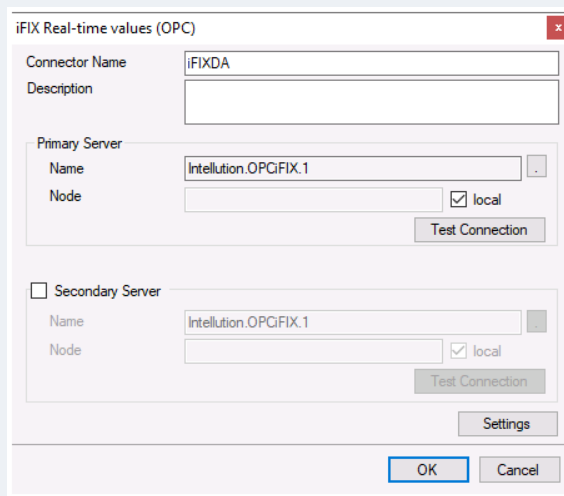
- Delete old connector to iFIX local
- Create new connector with the same name to iFIX OPC
- Update Real Time Data Groups
- Update Real time single tag connections
- Update Data Export connections
- Update Analytic and Event Frame tags
- Update Schedule event conditions

Change the Connector

From the **XLReporter Project Explorer**, on the right-side **Tools** tab, in the **Connection** section, select **Connectors**.



- Highlight the connector to the iFIX and note the name. In the above example this is *iFIXDA*
- **Delete** the connector
- Click **Add**
- Select **GE Digital, iFIX Real-time values (OPC)**



- Enter connector name as the previous connector name (*iFIXDA*)

The connector requires a **Primary Server** which, by default has **Node** set to *local*.

Remote Communication to iFIX OPC

If iFIX is installed on a workstation remote from the PLC then uncheck *local* and set the **Node** the *Machine Name* or *IP address* where the server is running.

The workstation must also have the OPC core components installed. To determine if the core components are installed verify the following file exists:

- 64 - bit OS C:\Windows\SysWow64\OPCEnum.exe
- 32 - bit OS C:\Windows\system32\OPCEnum.exe

If the components are not installed, then they are provided in the tools folder of the installation or from www.opcfoundation.org.

Server Settings

To connect to iFIX remotely, both the machine where the server is running and the machine where the client is running must have matching Windows user accounts and the client must be logged in with a matching account.

In addition, on the machine with the OPC DA server, certain DCOM settings must be enabled. For details on what DCOM settings to enable, see [OPC and DCOM: 5 Things You Need to Know](#).

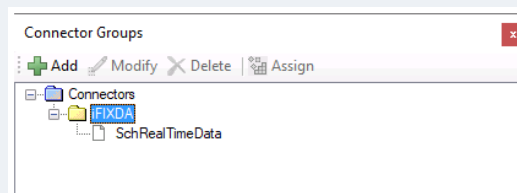
Windows Firewall

If the Windows Firewall is enabled on the machine where the iFIX OPC server is running **TCP Port 135** must be opened for remote clients to connect.

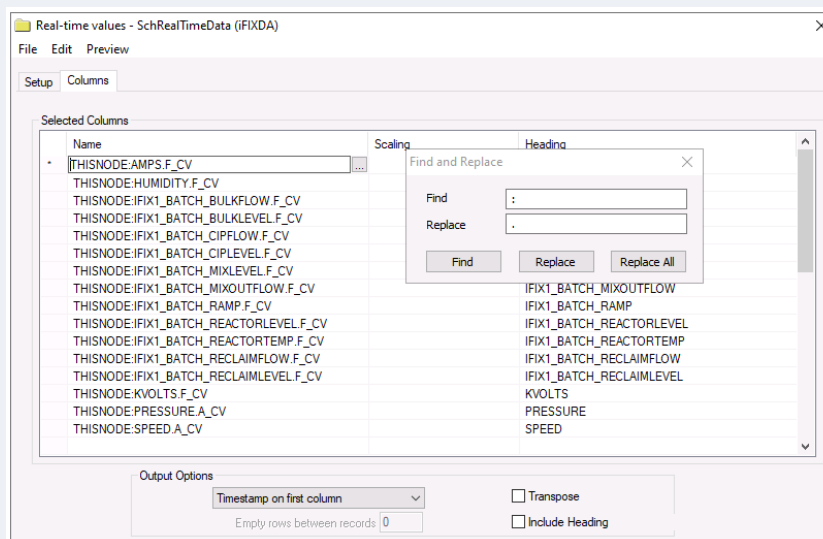
Update Data Groups

In most cases when a bulk import of tags are converted from GE iFIX Local to iFIX OPC the tag names change from *Node.Tag.F_CV* to *Node.Tag.F_CV*, in other words the colon after the *Node* changes to a period.

From the **XLReporter Project Explorer** in the right-side **Tools** tab, in the **Connect** section, select **Connector Groups**.



- Open each real time data group and select **Edit, Find and Replace**
- For **Find** enter :
- For **Replace** enter .
- Click **Replace All**



- Select **Preview** to test each real time data group

Update Single Tag Connections

From the **XLReporter Project Explorer** open the template and from the **Connect** tab, in the **Data** section select **Connect**.

Sheet: Any Sheet | Group: 0

Source

Connector: iFIXDA

Name: THISNODE.SPEED.A_CV

Target

Cell: \$C\$6

Type: Direct

- Select the row with the connection and click **Modify**.
- Change the colon after the *Node* to a period and click **OK**

Note, If multiple connections need to be updated use the **Export** and **Import** options.

Update Data Export Connections

From the **XLReporter Project Explorer**, open the template. From the **Connect** tab, in the **Data** section, select **Manage**.

Export

File ▾

Name: Report 1

Setup | Tag List

Cell	Tag	Type
\$A\$1	THISNODE.SPEED.F_CV	Number
* add link		

- If there are any **Data Export, To Tag List** management connections configured, modify each one. In the configuration, in front of each tag name in the **Tag** column, add the *Device Group Name*.

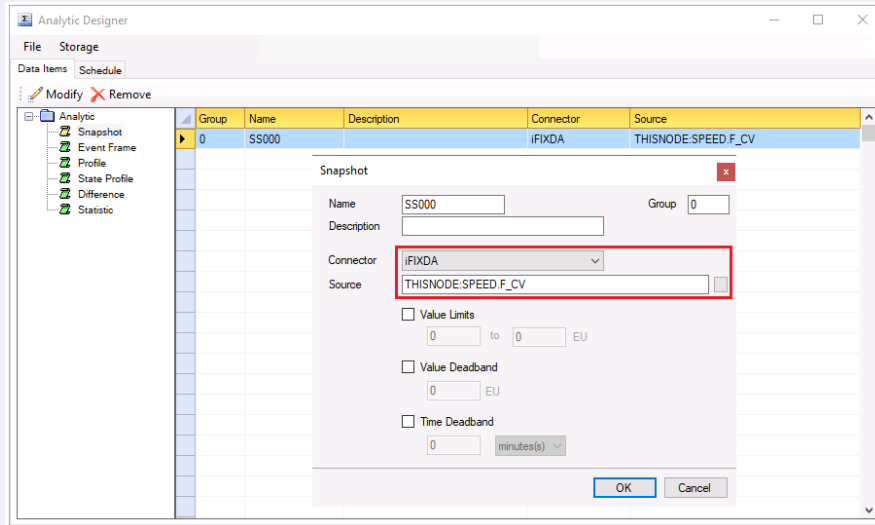
Update Event Frames

From the **XLReporter Project Explorer** in the right-side **Tools** tab, in the **Connect** section, select **Event Frames**.

- For each configured **Event Frame** listed, **Modify** and if using the iFIX connector, change the colon after the Node to a period.

Update Analytics

From the **XLReporter Project Explorer** in the right-side **Tools** tab, in the **Connect** section, select **Analytics**.



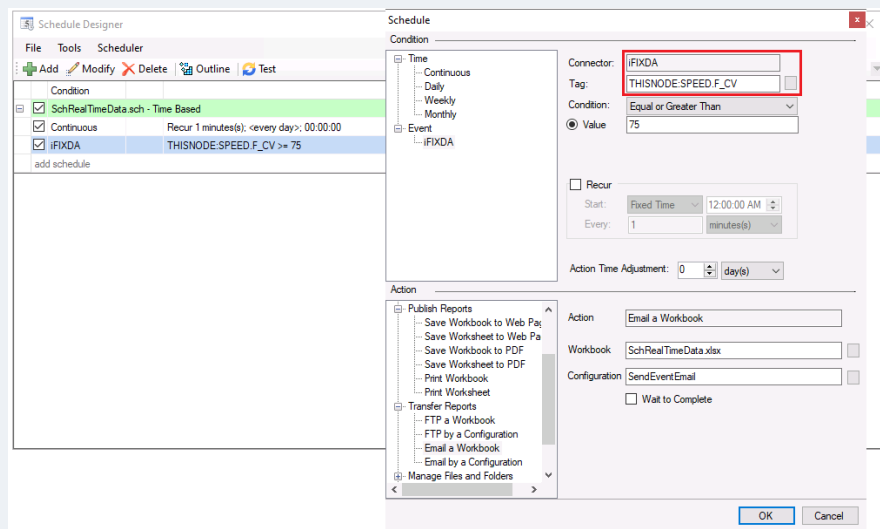
- For each analytic category on the left, change the colon after the Node to a period.

Under the **Schedule** tab,

- Modify** any schedule where the **Condition** is an event from the iFIX connector and change the colon after the Node to a period

Update Schedule Event Conditions

From the **XLReporter Project Explorer** in the right-side **Tools** tab, in the **Report** section, select **Schedule Designer**.



- For each schedule line set to trigger on an event, modify the schedule line. Under **Condition**, for **Tag**, change the colon after the Node to a period.